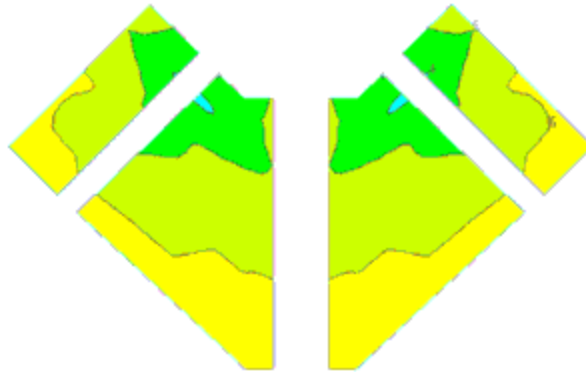


The above figure shows a color-coded %ALCONS contour map of the church with its original sound system and acoustic environment. The dark green areas is 5% ALCONS and the lighter green area is 6%. The yellow is 7%, and generally the maximum ALCONS that should be allowed. The light orange is 8% loss dark orange is 9% loss, and red is 10% loss. Thus, any area that is orange is marginal and no more than 10% of the seating should be orange. As one can see from the image, approximately 70% of the seats were unacceptable, in terms of %ALCONS!



The above figure shows what a difference the new sound system with acoustic treatment made to this room. Now the green areas occupy a much larger area and the yellow, which represents good, covers the balance of the seats. There is no orange or red to be seen. Everyone in the church congregation now hears with ease (no pun intended)!