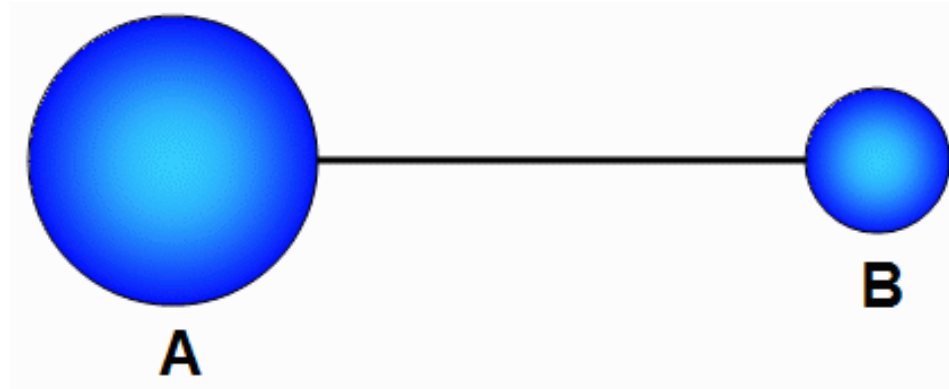


Checkpoint 1b

The two conductors are now attached by a conducting wire.

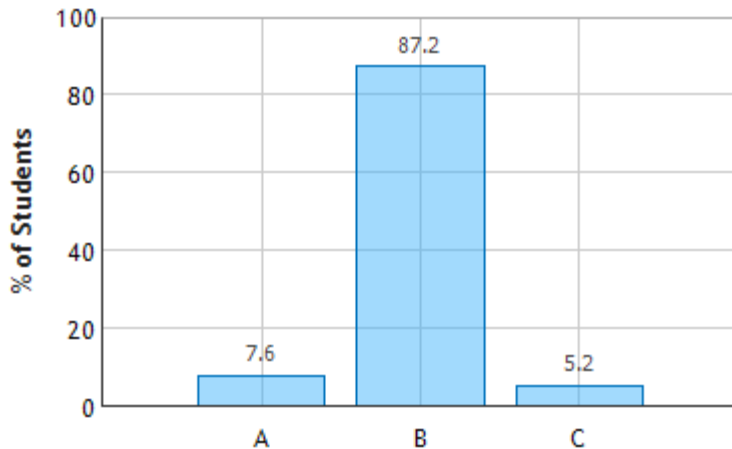


Compare the potential on surface A with the potential on surface B

A) $V_A > V_B$

B) $V_A = V_B$

C) $V_A < V_B$



“By connecting the two conductors, we are effectively making them one conductor, and the potential on a conductor is the same everywhere, so the potential of A = the potential of B.”