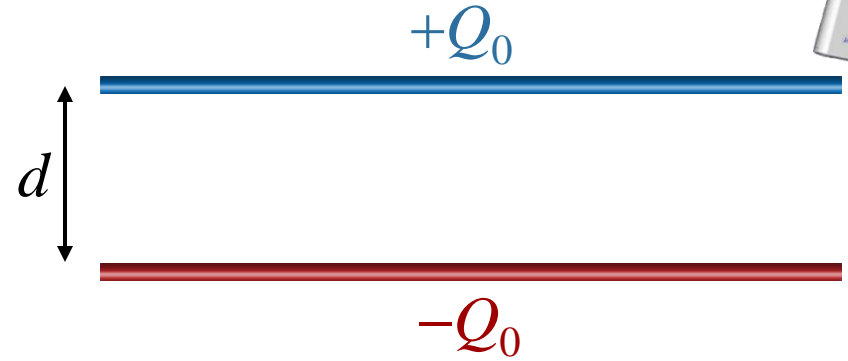


# Question Related to CheckPoint

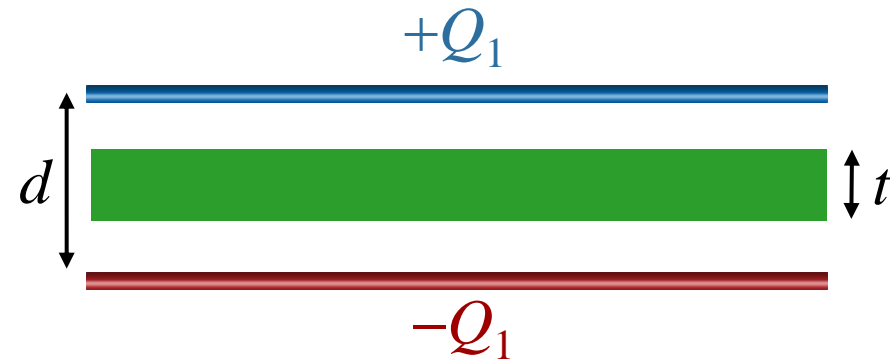


Initial charge on capacitor =  $Q_0$



Insert uncharged conductor

Charge on capacitor now =  $Q_1$



How is  $Q_1$  related to  $Q_0$  ?

A)  $Q_1 < Q_0$

B)  $Q_1 = Q_0$

C)  $Q_1 > Q_0$

Plates not connected to anything



**CHARGE CANNOT CHANGE !**