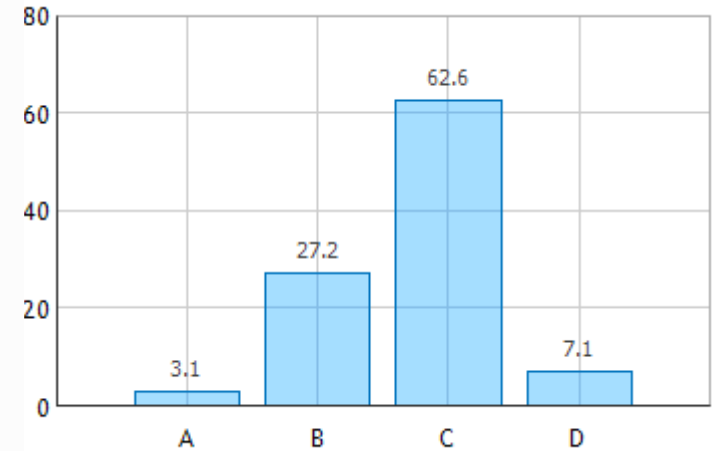
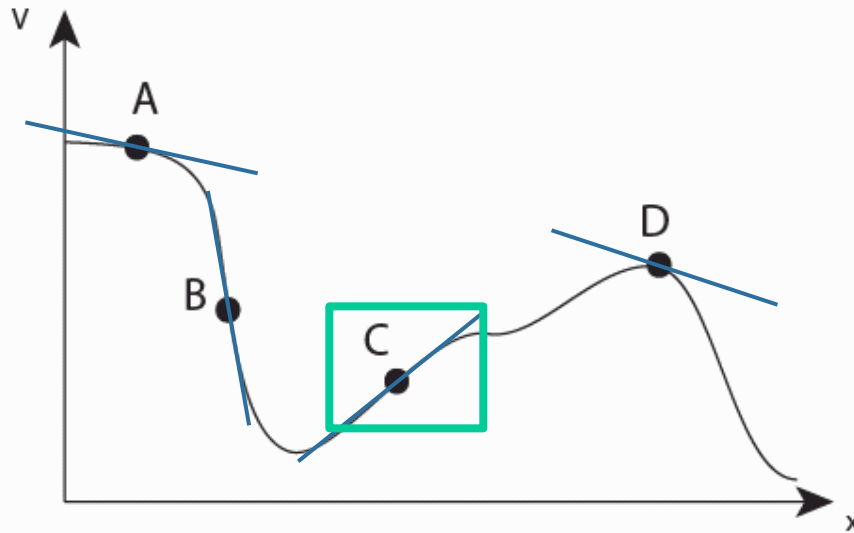


CheckPoint 1b



2) The electric potential in a certain region is plotted in the following graph



At which point is the electric field pointing in the negative x direction?

“B) negative slope”

“C) The graph has a positive slope”

How do we get E from V ?

$$\vec{E} = -\vec{\nabla}V \quad \longrightarrow \quad E_x = -\frac{\partial V}{\partial x} \quad \longrightarrow \quad \text{Look at slopes!}$$