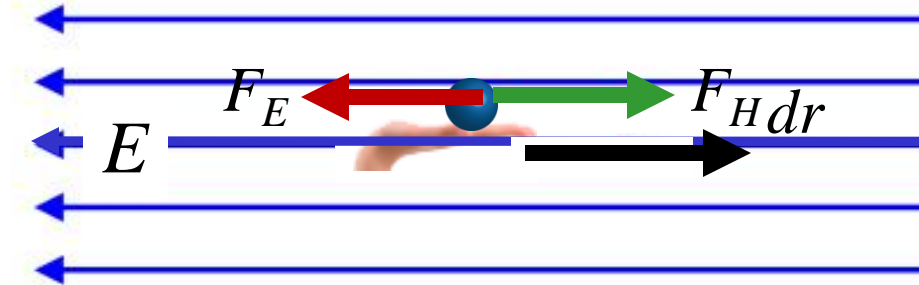


# Clicker Question



You hold a positively charged ball and walk due east in a region that contains an electric field directed due west.



$W_H$  is the work done by the hand on the ball

$W_E$  is the work done by the electric field on the ball

Which of the following statements is true:

A)  $W_H > 0$  and  $W_E > 0$

B)  $W_H > 0$  and  $W_E < 0$

C)  $W_H < 0$  and  $W_E < 0$

D)  $W_H < 0$  and  $W_E > 0$