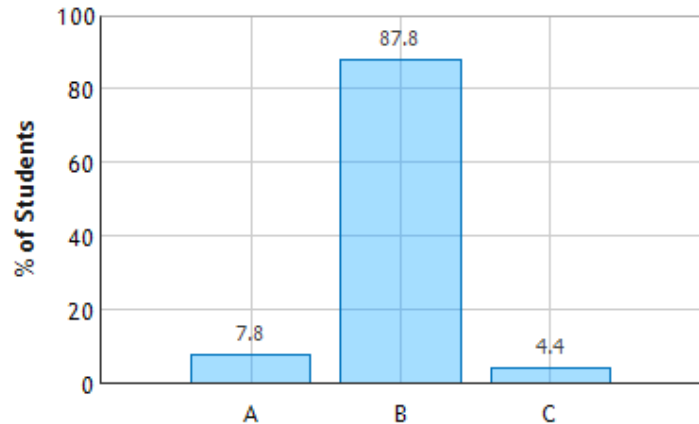


CheckPoint 4

A charge is released from rest in a region of electric field. The charge will start to move

- A) In a direction that makes its potential energy increase.
- B) In a direction that makes its potential energy decrease**
- C) Along a path of constant potential energy.

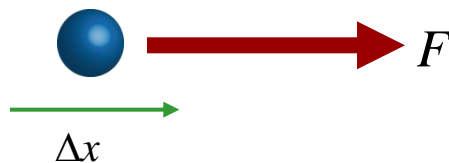


“Potential energy is always minimized in systems. Balls roll downhill, not uphill.”

It will move in the same direction as F

Work done by force is positive

$\Delta U = -\text{Work}$, so is negative



Nature wants things to move in such a way that PE decreases