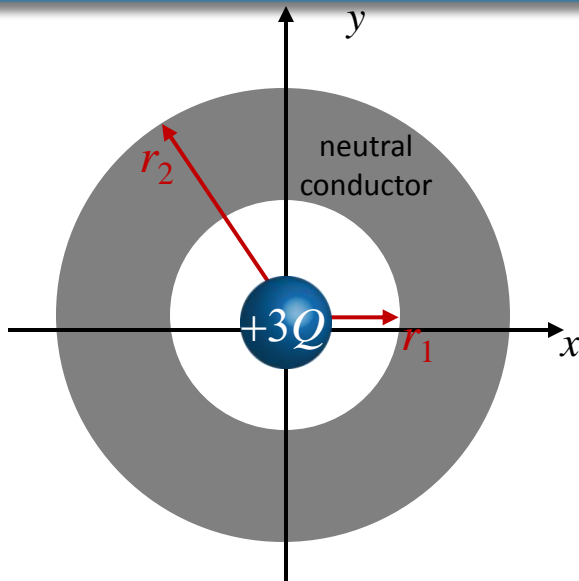


# Calculation



Point charge  $+3Q$  at center of neutral conducting shell of inner radius  $r_1$  and outer radius  $r_2$ .

a) What is  $E$  everywhere?

First question: Do we have enough symmetry to use Gauss' Law to determine  $E$ ?

Yes, Spherical Symmetry (what does this mean???)

Magnitude of  $E$  depends only on  $R$

- A) Direction of  $E$  is along  $\hat{x}$
- B) Direction of  $E$  is along  $\hat{y}$
- C) Direction of  $E$  is along  $\hat{r}$
- D) None of the above