

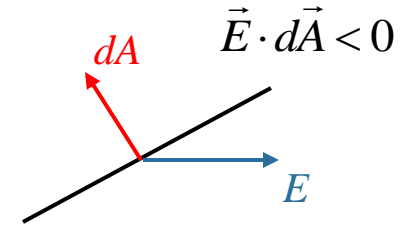
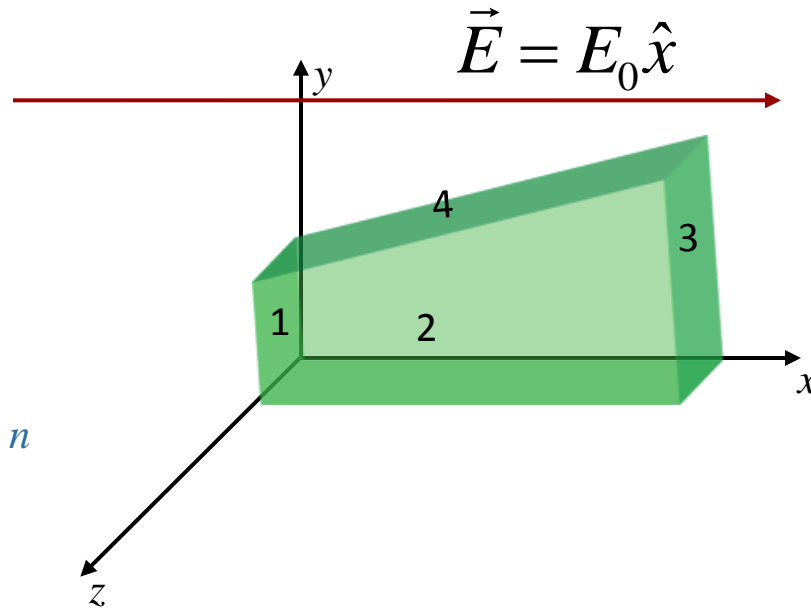
# Trapezoid in Constant Field



Label faces:

- 1:  $x = 0$
- 2:  $z = +a$
- 3:  $x = +a$
- 4: slanted

Define  $\Phi_n =$  Flux through Face  $n$



A)  $\Phi_1 < 0$

B)  $\Phi_1 = 0$

C)  $\Phi_1 > 0$

A)  $\Phi_2 < 0$

B)  $\Phi_2 = 0$

C)  $\Phi_2 > 0$

A)  $\Phi_3 < 0$

B)  $\Phi_3 = 0$

C)  $\Phi_3 > 0$

A)  $\Phi_4 < 0$

B)  $\Phi_4 = 0$

C)  $\Phi_4 > 0$