

Executive Summary - Mirrors & Lenses:

$$S > 2f$$

real
inverted
smaller

$$2f > S > f$$

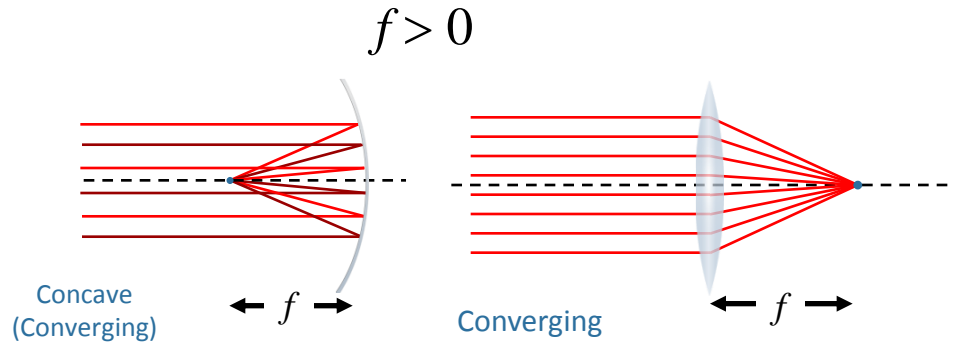
real
inverted
bigger

$$f > S > 0$$

virtual
upright
bigger

$$S > 0$$

virtual
upright
smaller



$$\frac{1}{S} + \frac{1}{S'} = \frac{1}{f} \quad M = -\frac{S'}{S}$$

