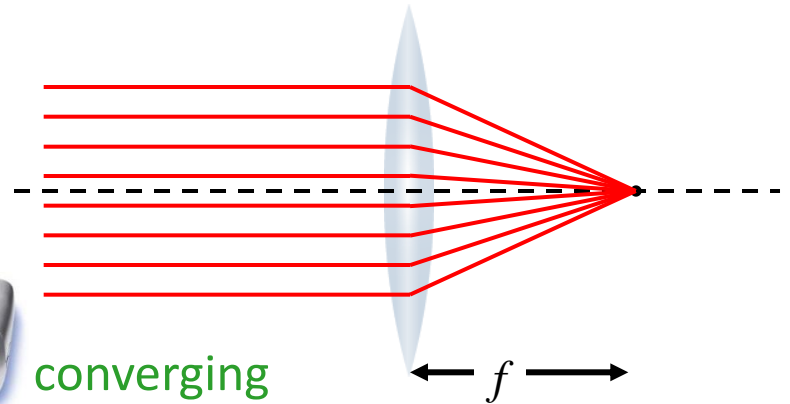
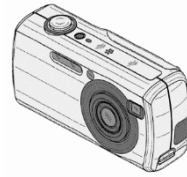


Executive Summary - Lenses

$$S > 2f$$

real
inverted
smaller



$$2f > S > f$$

real
inverted
bigger



converging



$$f > S > 0$$

virtual
upright
bigger



$$\frac{1}{s} + \frac{1}{s'} = \frac{1}{f}$$

$$M = -\frac{s'}{s}$$

$$S > 0$$

virtual
upright
smaller



diverging

