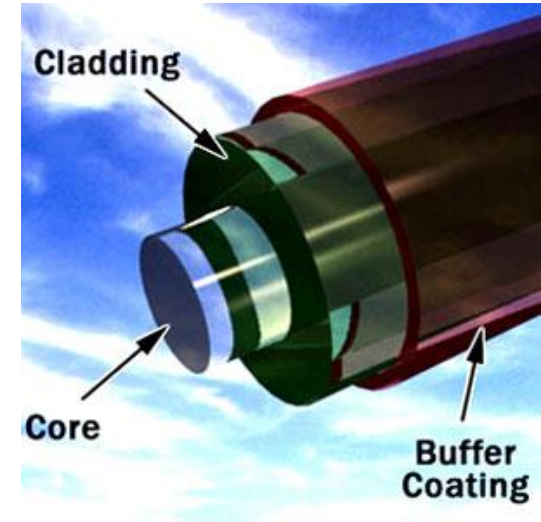
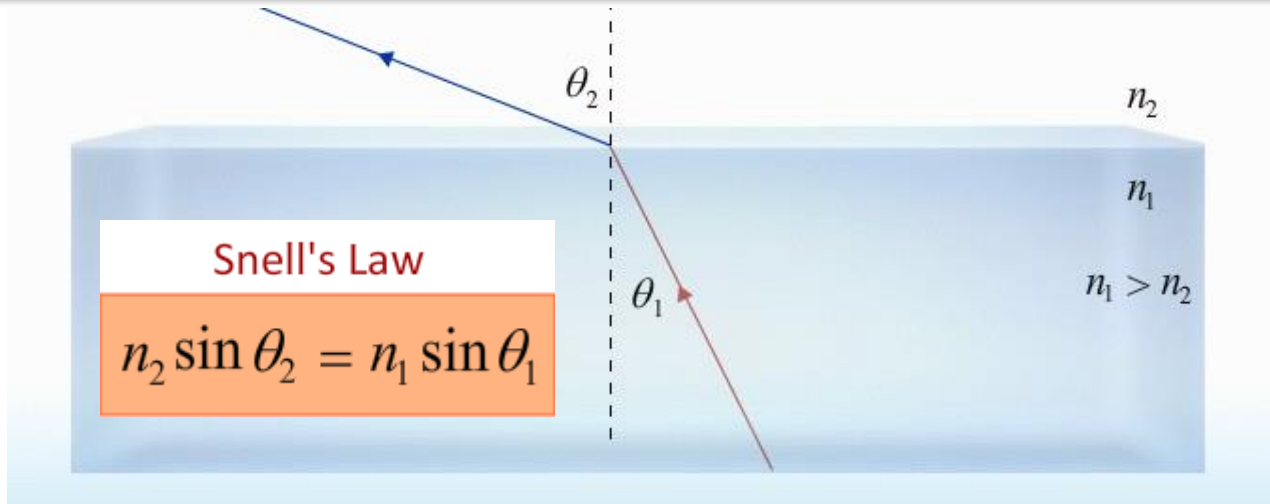
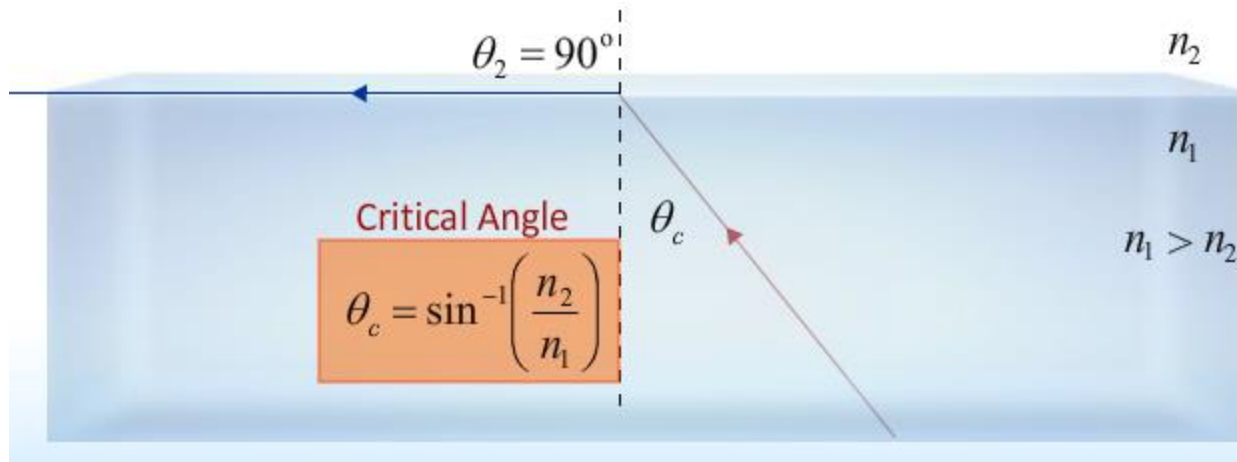


# Total Internal Reflection

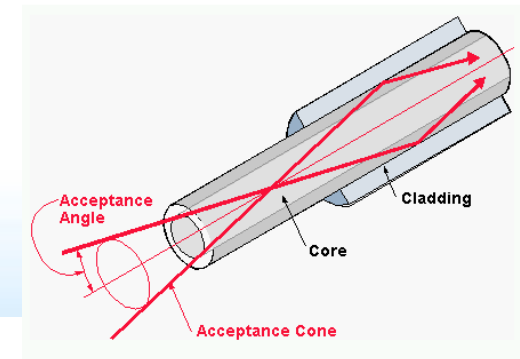


NOTE:  $n_1 > n_2$  implies  $\theta_2 > \theta_1$

BUT:  $\theta_2$  has max value =  $90^\circ$ !



From Computer Desktop Encyclopedia  
© 1999 The Computer Language Co. Inc.



$\theta_1 > \theta_c$  → Total Internal Reflection