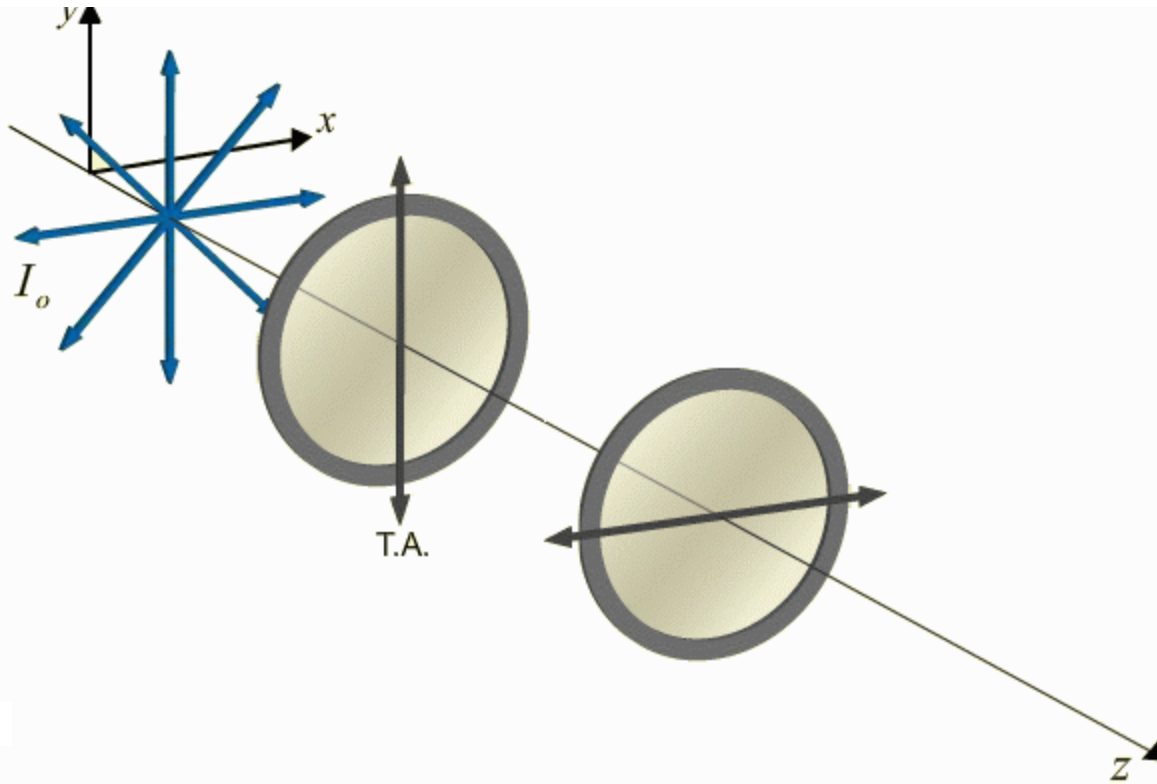


CheckPoint 1b

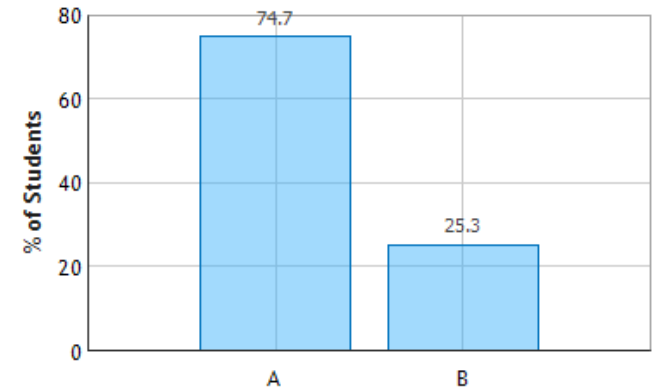


An unpolarized EM wave is incident on two orthogonal polarizers.



Two Polarizers

Two Orthogonal Polarizers: Question 3 (N = 802)



Is it possible to increase this percentage by inserting another Polarizer between the original two?

A. Yes

B. No

DEMO

“just like the example in the prelecture, add one at 30 degrees”