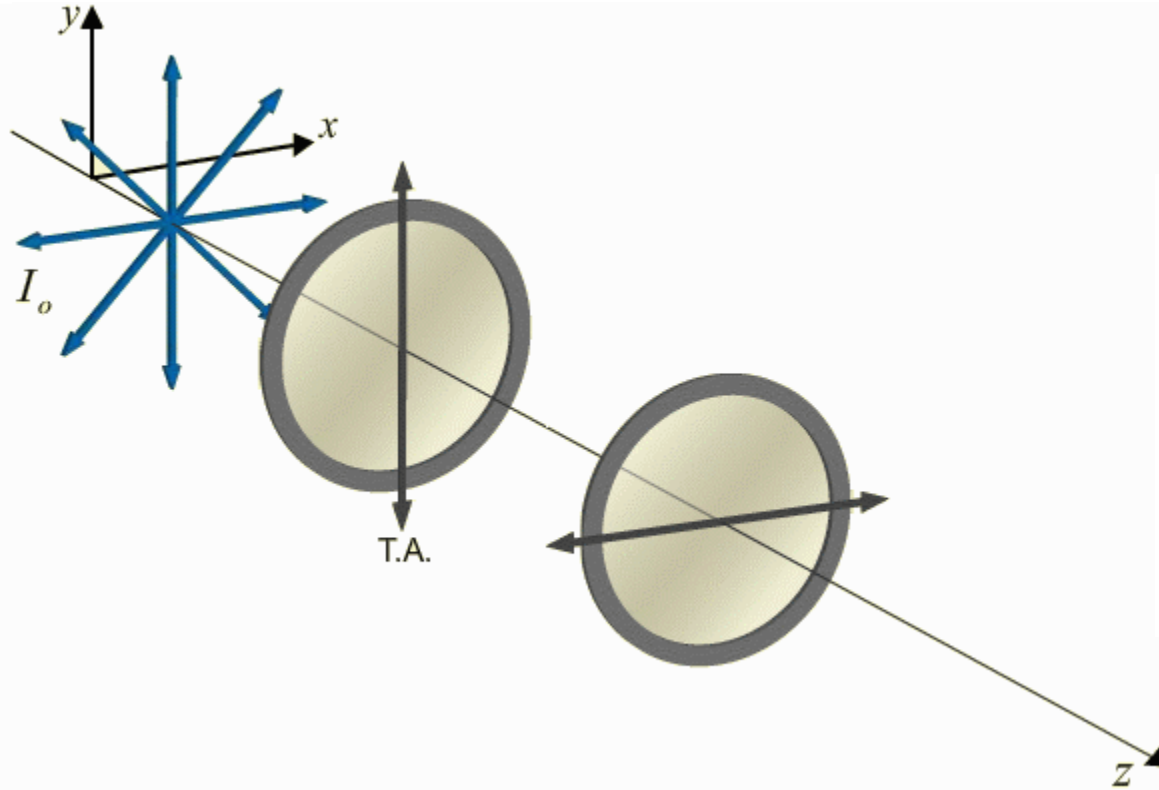


CheckPoint 1a

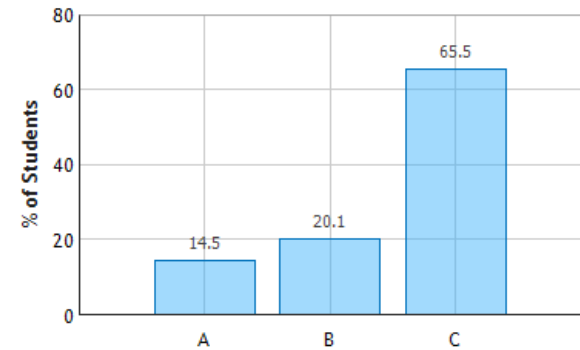


An unpolarized EM wave is incident on two orthogonal polarizers.

Two Polarizers



Two Orthogonal Polarizers: Question 1 (N = 802)



What percentage of the intensity gets through both polarizers?

A. 50%

B. 25%

C. 0%



No light will come through. $\cos(90^\circ) = 0$

DEMO