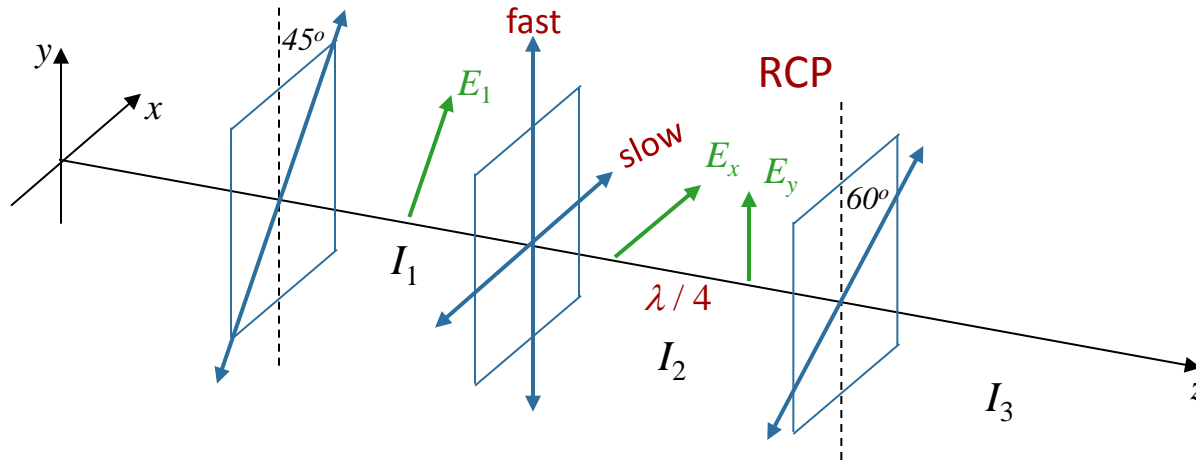


Calculation



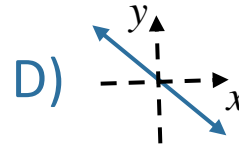
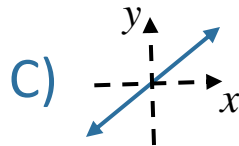
Light is incident on two linear polarizers and a quarter wave plate (QWP) as shown.



What is the polarization of the light after the QWP?

A) LCP

B) RCP



E) un-polarized

Light incident on QWP is linearly polarized at 45° to fast axis



Light will be circularly polarized after QWP

LCP or RCP? Easiest way:
Right Hand Rule:

Curl fingers of RH back to front
Thumb points in dir of propagation
if right hand polarized.



RCP