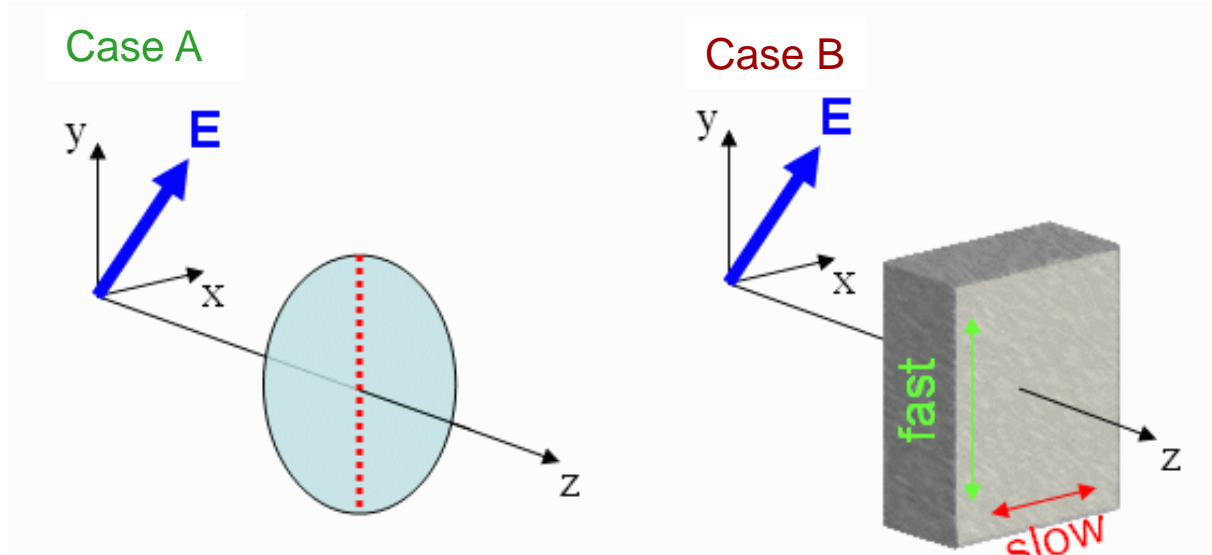


# Checkpoint 2c

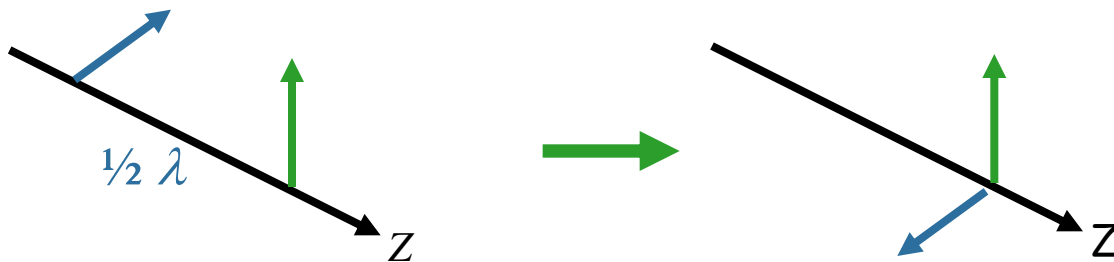


Identical linearly polarized light at  $45^\circ$  from the y-axis and propagating along the z axis is incident on two different objects. In Case A the light intercepts a linear polarizer with polarization along the y-axis. In Case B, the light intercepts a quarter wave plate with fast axis along the y-axis.



If the thickness of the quarter-wave plate in Case B is doubled, what is the polarization of the wave after passing through the wave plate?

- A.** linearly polarized
- B.** circularly polarized
- C.** undefined



A Polarizer and a Quarter-Wave Plate: Question 5 (N = 796)

