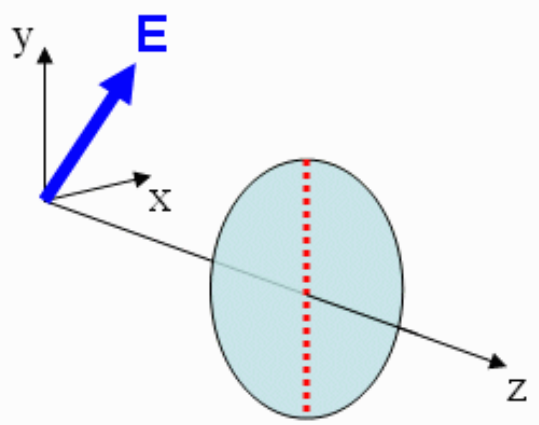




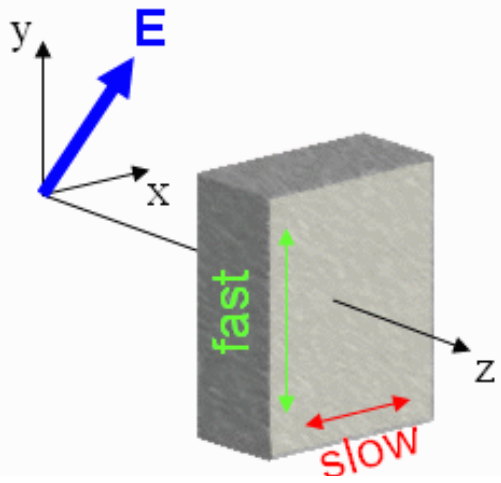
Identical linearly polarized light at  $45^\circ$  from the y-axis and propagating along the z axis is incident on two different objects. In Case A the light intercepts a linear polarizer with polarization along the y-axis. In Case B, the light intercepts a quarter wave plate with vast axis along the y-axis.

the light intercepts a quarter wave plate with fast axis along the y-axis

Case A

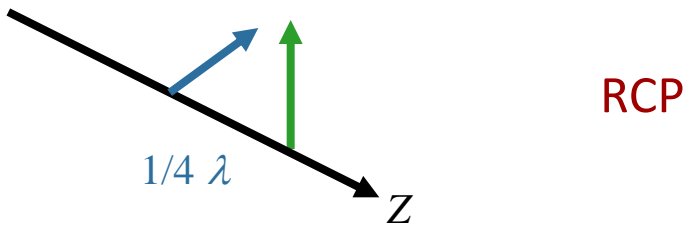


Case B



What is the polarization of the light wave in Case B after it passes through the quarter wave plate?

- A. linearly polarized
- C. right circularly polarized**
- B. left circularly polarized
- D. undefined



Curl fingers from slow to fast, thumb should point in direction of propagation

A Polarizer and a Quarter-Wave Plate: Question 3 (N = 799)

