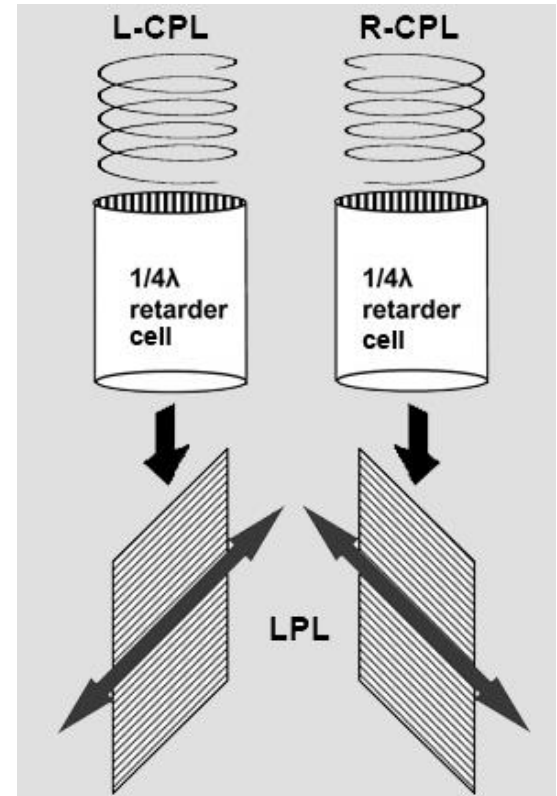
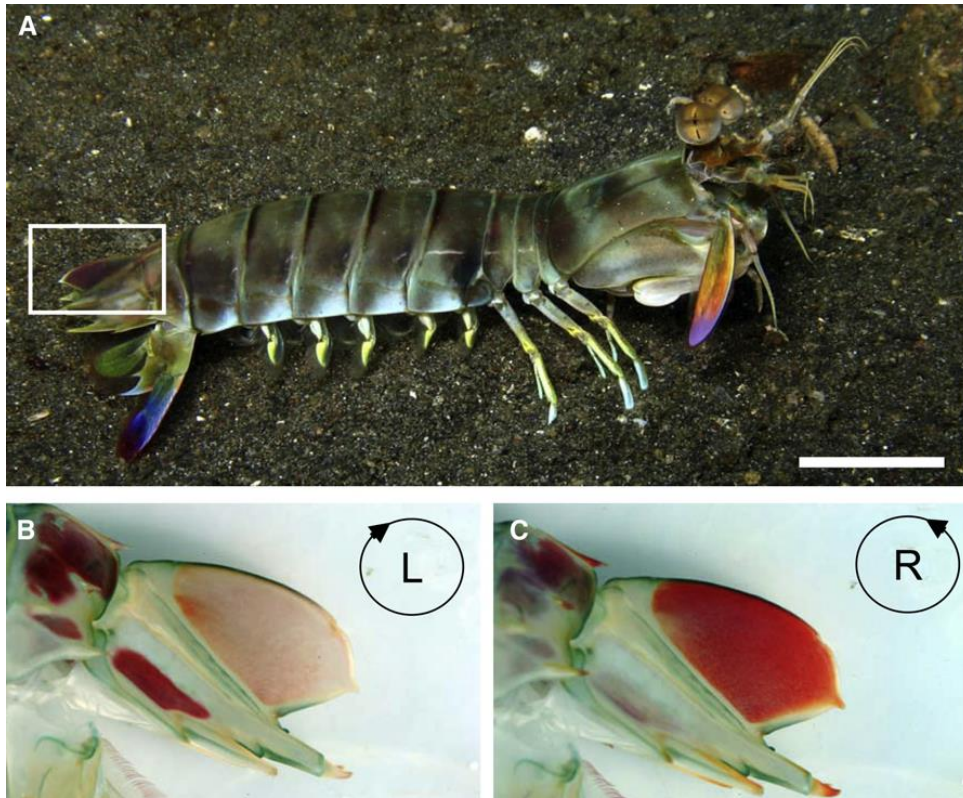


The Mantis Shrimp



- Circularly polarized light (CPL) is very rare in nature.
- The Mantis shrimp has structures on its tail that convert the reflected ambient light to CPL.
- Structures in its eye can perceive CPL by converting it into LPL--the receptors are sensitive to LPL.
- The production and detection of CPL may be useful for “stealth” communication between Mantis shrimp.