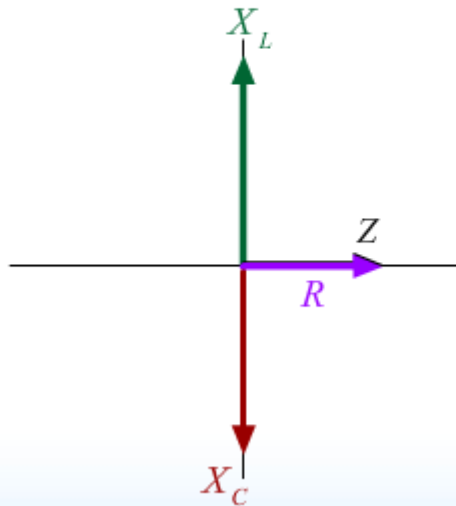
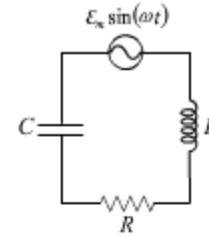


# Resonance



## Resonance

$I_m$  is a maximum  $\longrightarrow I_m = \frac{\mathcal{E}_m}{R}$

$\omega = \omega_o$

$Z$  minimized  $\longrightarrow X_L = X_C$

$\phi = 0^\circ$

$$\omega_o = \frac{1}{\sqrt{LC}}$$

Light-bulb Demo