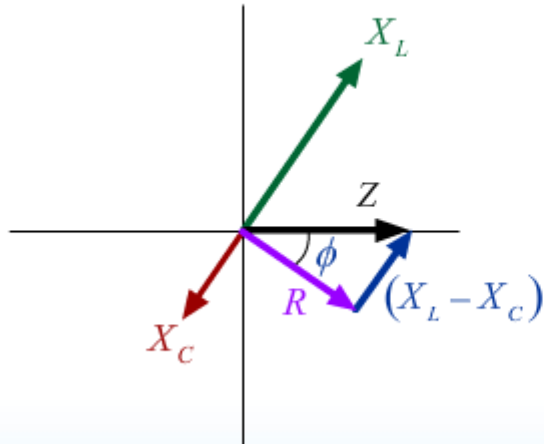


# Off Resonance



$$x \equiv \frac{\omega}{\omega_0} \quad Q^2 \equiv \frac{L}{R^2 C}$$

$$I_m = \frac{\mathcal{E}_m}{R} \frac{1}{\sqrt{1 + Q^2 \frac{(x^2 - 1)^2}{x^2}}}$$

