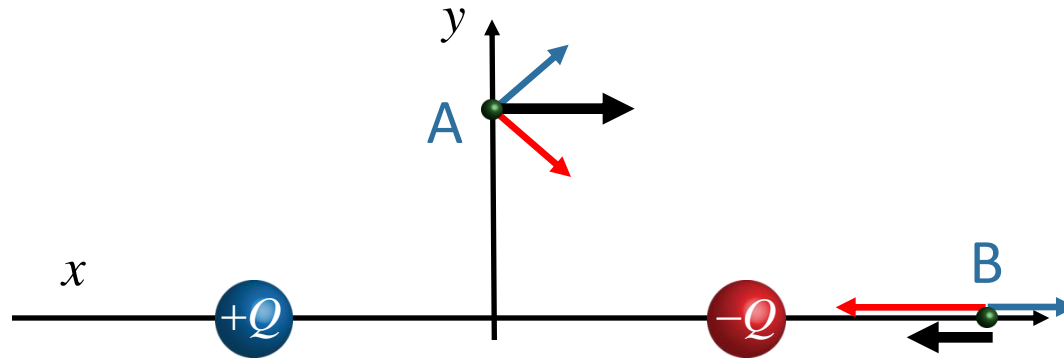


Checkpoint



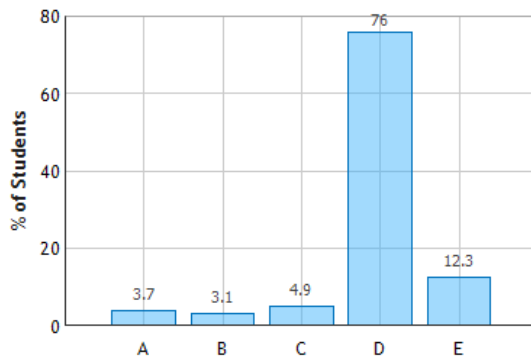
"I can't figure out the field directions at all."



Two equal, but opposite charges are placed on the x axis. The positive charge is placed to the left of the origin and the negative charge is placed to the right, as shown in the figure above.

What is direction at point A

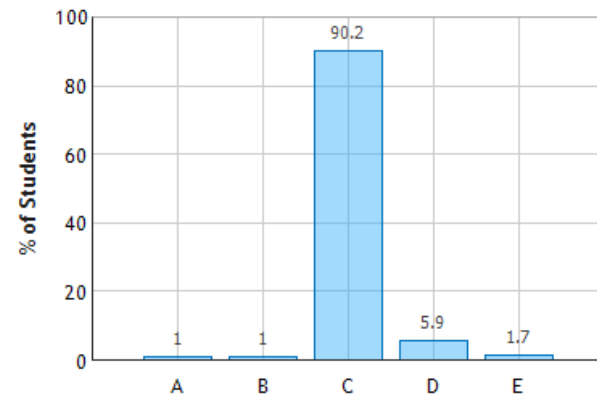
Field Directions: Question 1 (N = 863)



a) Up b) down c) Left **d) Right** e) zero

What is direction at point B

Field Directions: Question 3 (N = 858)



a) Up b) down **c) Left** d) Right e) zero