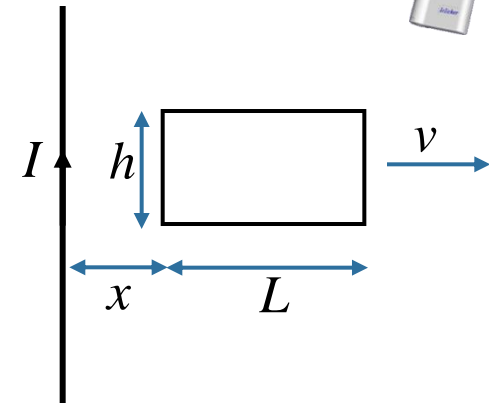


Example Problem

A rectangular loop ($h = 0.3\text{ m}$ $L = 1.2\text{ m}$) with total resistance of 5Ω is moving away from a long straight wire carrying total current 8 amps . What is the induced current in the loop when it is a distance $x = 0.7\text{ m}$ from the wire?



What is the direction of the B field produced by the wire in the region of the loop?

- A) Into the page
- B) Out of the page
- C) Left
- D) Right
- E) Up