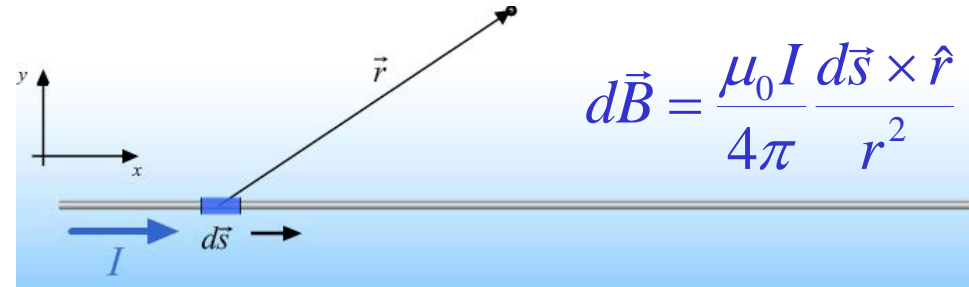


Biot-Savart Law:

What is it?

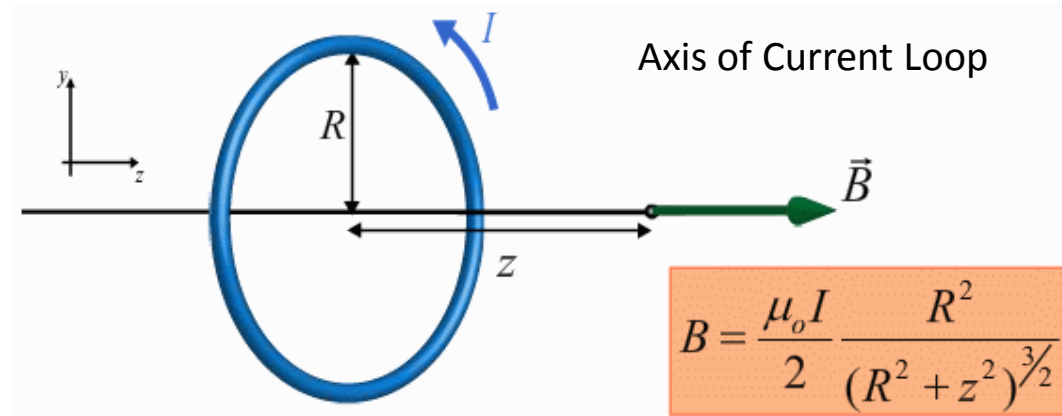
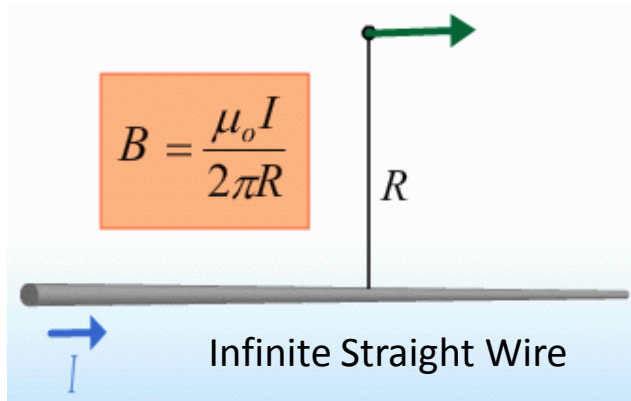
Fundamental law for determining the direction and magnitude of the magnetic field due to an element of current



We can use this law to calculate the magnetic field produced by ANY current distribution

BUT

Easy analytic calculations are possible only for a few distributions:



Plan for Today: Mainly use the results of these calculations!

GOOD NEWS: Remember Gauss' Law?
Allowed us to calculate E for symmetrical charge distributions



NEXT TIME: Introduce Ampere's Law Allows us to calculate B for symmetrical current distributions