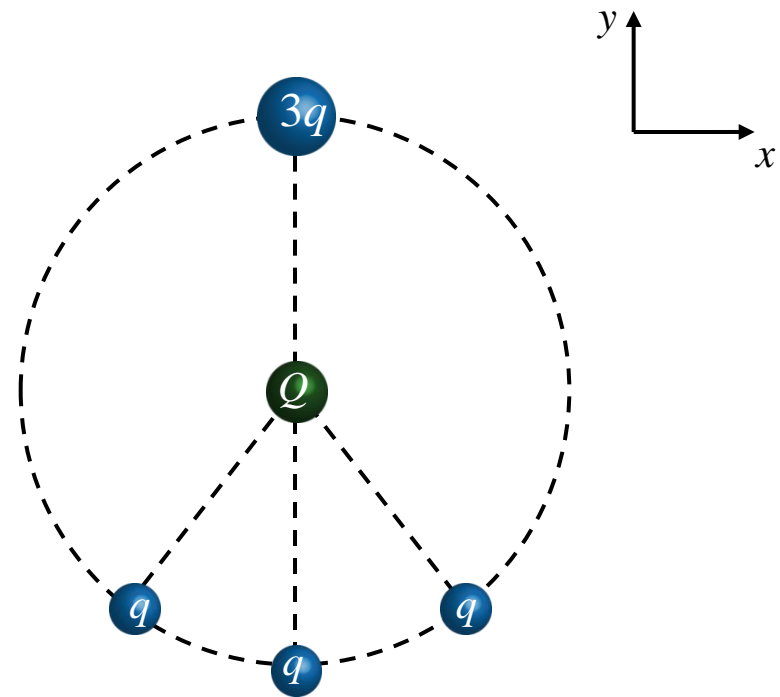


Checkpoint

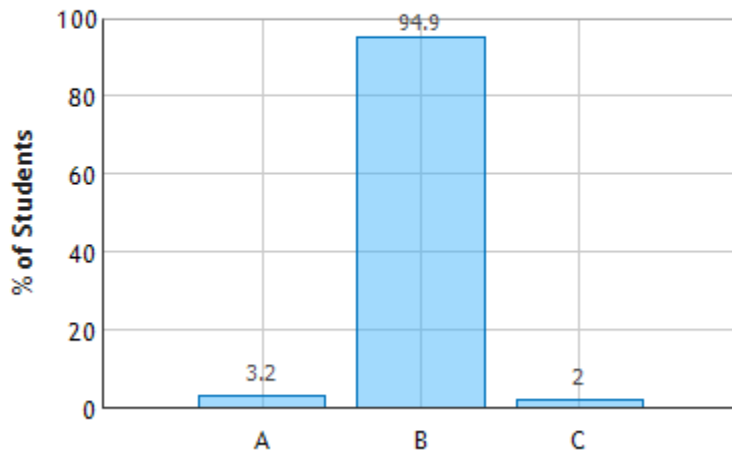
Four charged particles are placed on a circular ring with radius 3 m as shown below. A particle with charge Q is placed in the center of the ring

What is the direction of horizontal force on Q ?

- A) $F_x > 0$ B) $F_x = 0$ C) $F_x < 0$



Force from Four Charges: Question 1 (N = 760)



Excellent job!

“The two outer smaller charges will cancel in the x direction and the middle smaller charge does not have an x component”