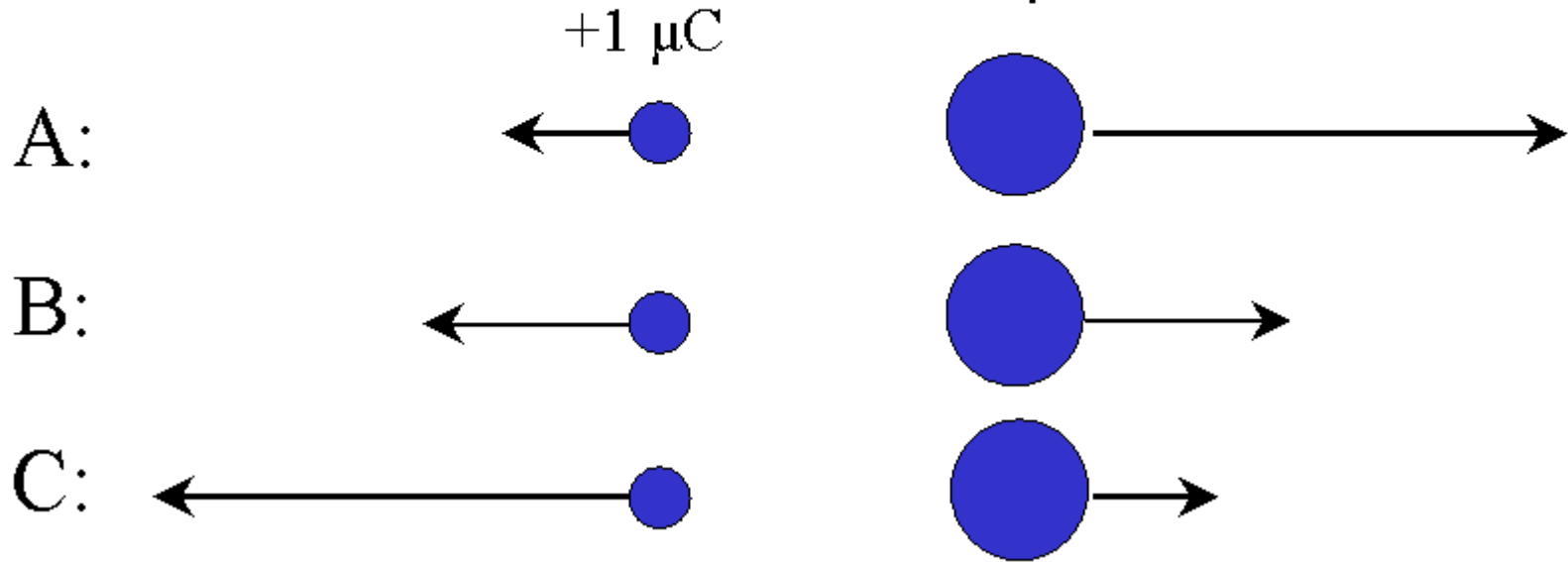
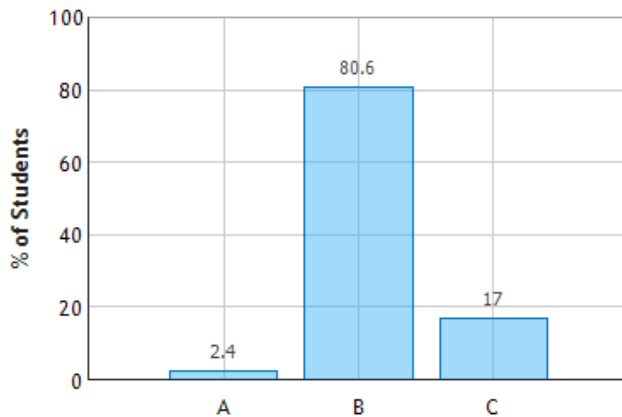


1) Two charges $q = +1 \mu\text{C}$ and $Q = +10 \mu\text{C}$ are placed near each other as shown in the figure. Which of the following diagrams depicts the forces acting on the charges:

Checkpoint 1



Forces on Two Charges: Question 1 (N = 764)



“Because the two charges are positive, they repel (or go in opposite direction). Because the charges are from one atom to another, the sizes of the force go on opposite end.”

“Due to the newton's third law, the forces acting on these two objects should be equal.”

“When multiplying, the order of the charges doesn't matter. The forces are equal in magnitude and opposite.”