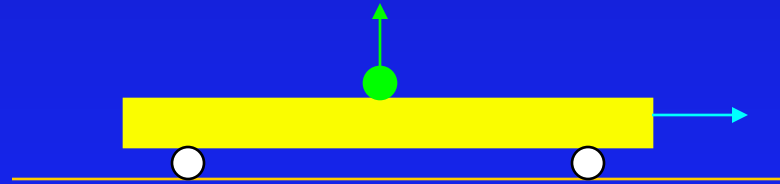


# Train Act/Demo

A flatbed railroad car is moving along a track at constant velocity. A passenger at the center of the car throws a ball straight up. Neglecting air resistance, where will the ball land?

- A. Forward of the center of the car
- B. At the center of the car ← correct
- C. Backward of the center of the car



•x- direction ball and car start with same position and velocity,  $a=0$ , so always have same position

Demo - train