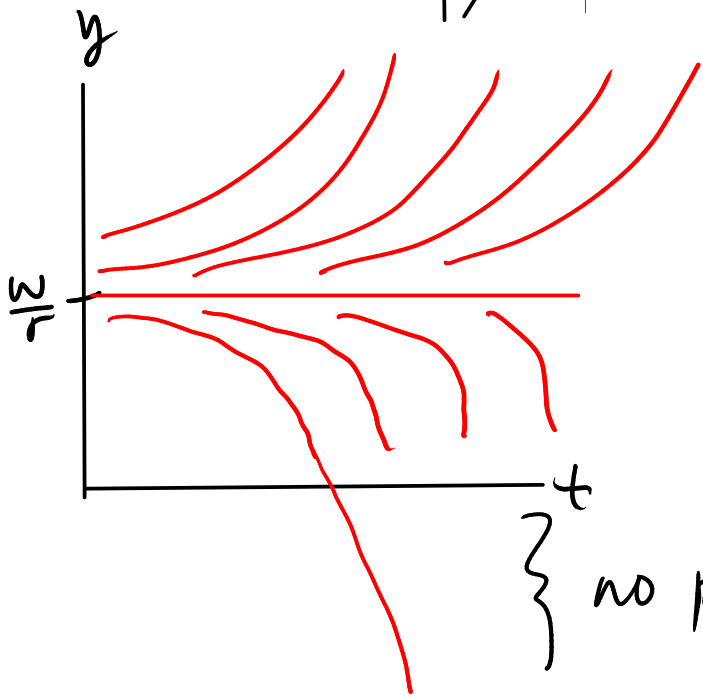
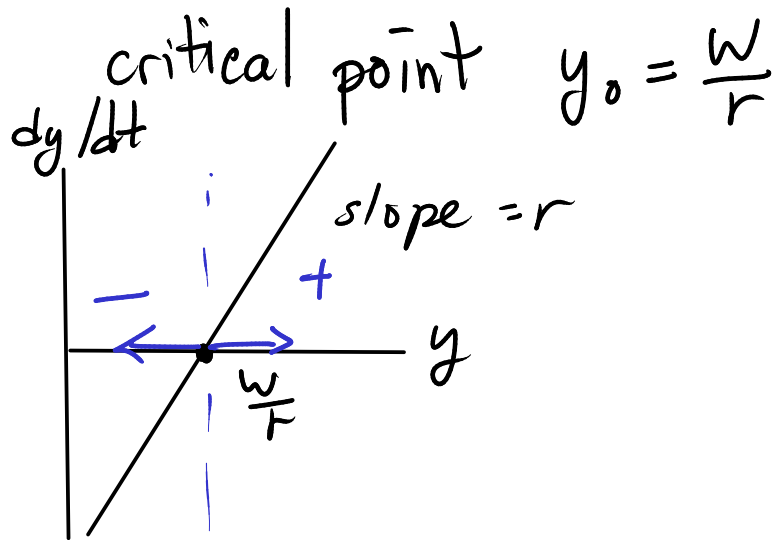


$$\frac{dy}{dt} = ry - W$$

Graph $f(y)$



A solution bigger than $\frac{W}{r}$ increases

A solⁿ less than $\frac{W}{r}$ decreases.

} no physical meaning.

Logistic equation (populations) $y = \#$ in pop.

Natural growth $\frac{dy}{dt} = ky$

→ k is constant exponential growth.

→ logistic growth, k is not constant

as y increases, k should decrease due limitations on food, shelter, etc