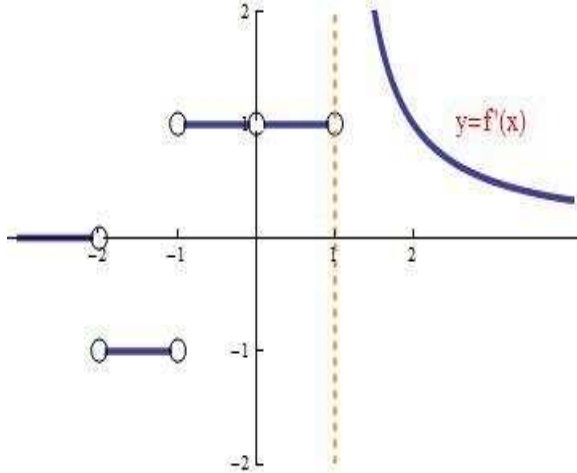


Below you have the graph of $y = f'(x)$



Alternative Derivative Notations Let $f(x)$ be a function the following are possible notations for the derivative of f :

$f'(x)$

y'

Leibniz Notation: $\frac{dy}{dx} = \frac{df}{dx}$

Operator Notation : $\frac{d}{dx}(f(x))$ ($\frac{d}{dx}$ says take the derivative of whatever follows).